



EXCELLENT LOCATION • SPACIOUS FLOOR PLANS • GREAT SERVICE

SAHARA PALMS & PLAYA PALMS

Welcome to our community. On 40 acres of beautifully landscaped and well-maintained grounds, you will find the much desired combination of service and amenities...all in a casual and appealing environment. Our residents enjoy a peaceful oasis of privacy and comfort, yet you're just minutes away from Gilbert's fine restaurants, shops, supermarkets and most retail and commercial services.

Amenities include your private patio or balcony, individual heating and air conditioning, and an efficiently designed kitchen with a refrigerator / freezer, dishwasher, oven, garbage disposal and microwave. Washers and dryers are available in many units, and full-size washer / dryer connections come in our large 3 bedroom floor plan. Spacious closets make it easy to unpack and settle into the relaxing lifestyle that awaits you...

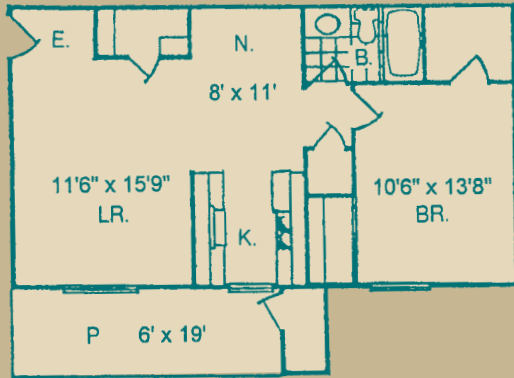
Take a dip in one of our pools or jacuzzis; work out in one of the fitness rooms, and finish it off with a sauna; enjoy a tennis or basketball game; meet your neighbors poolside or entertain family and friends in one of our clubhouses. All of this and more is yours.



Our professional and caring Staff is waiting to welcome you.
Come home to The Palms.

A: PRINCESS PALM

720 sq. ft. – 1BR / 1BA

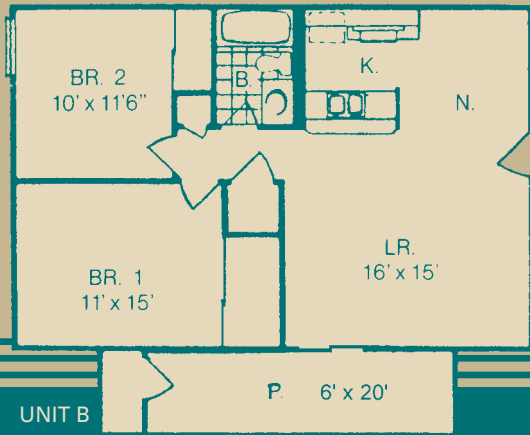


1 Bd. App. Fee	\$25.00
1 Bd. Sec. Dep.	\$100.00
W/D Charge	\$25.00
Rental*	\$



B: MAJESTY PALM

840 sq. ft. – 2BR / 1BA



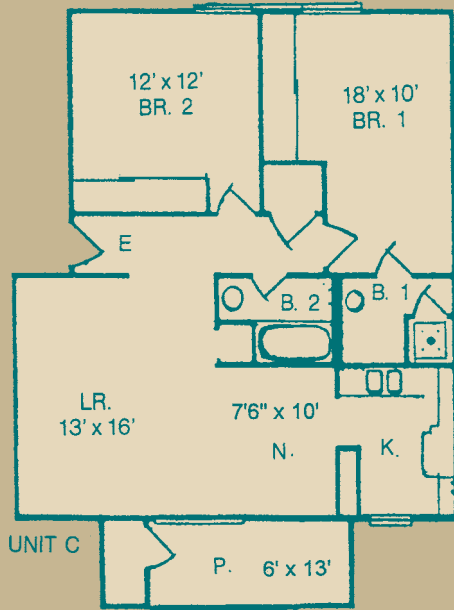
2 Bd. App. Fee	\$25.00
2 Bd. Sec. Dep.	\$125.00
W/D Charge	\$25.00
Rental*	\$



* Limited Time Only, Subject to Change.

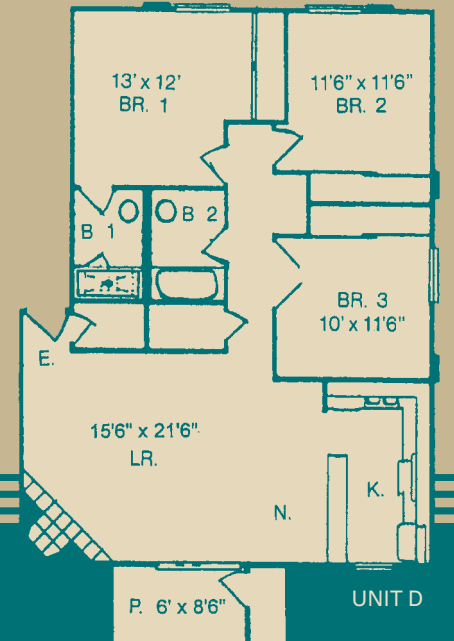
C: ROYAL PALM

1000 sq. ft. – 2BR / 2BA



D: QUEEN PALM

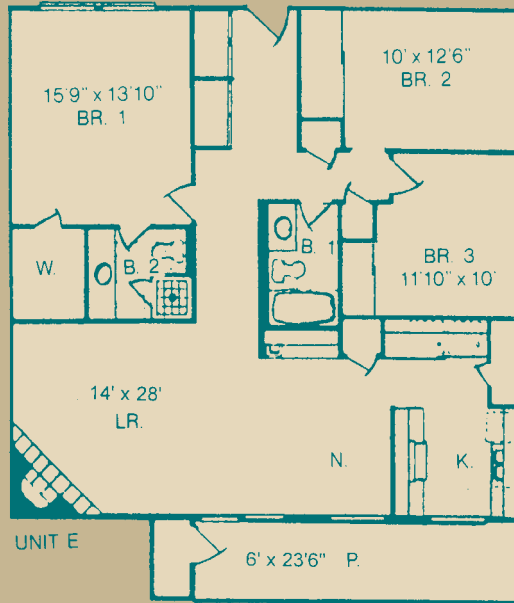
1194 sq. ft. – 3BR / 2BA



UNIT D

E: KING PALM

1444 sq. ft. – 3BR / 2BA

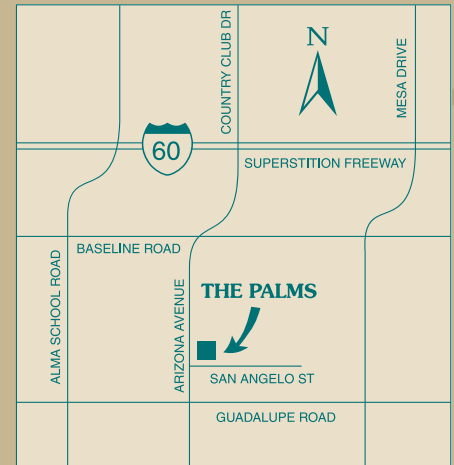


3 Bd. App. Fee	\$25.00
3 Bd. Sec. Dep.	\$150.00
W/D Charge	\$25.00
Rental*	\$

Upgraded kitchens available in select units for additional cost

THE PALMS APARTMENT HOMES OFFER YOU...

- Wall-to-Wall Carpeting
- Washer & Dryers in Select Models
- Full Size Washer /Dryer Connections in large 3-bedroom King Palm Units
- Individually Controlled Heating and Air Conditioning
- Upgraded Kitchens in Select Units
- Blinds
- Ceiling Fans
- Spacious Closets
- Large Private Patios / Balconies
- Individual 40 Gallon Hot Water Heaters
- Cable Ready
- High Speed Internet Access Available
- Reserved Covered Parking
- Courtesy Attendants
- Professional On-Site Management
- 24 Hour On-Site Maintenance
- 2 Spacious Clubhouses Available for Gatherings
- 4 Saunas
- 2 Indoor Jacuzzis
- 4 Pools
- 2 Co-ed Fitness Rooms
- 2 Tennis Courts
- 2 Basketball Courts
- Horseshoe Pits
- 2 Roller Hockey Areas
- 4 Playgrounds
- 10 Laundry Facilities
- Car Wash Area
- Pet Friendly. Ask about our policy.
- Gilbert Schools
- Near Superstition Freeway, Shopping, Major Employers, Houses of Worship, and Hospitals, yet tucked away from the hustle and bustle
- Close to public transportation



SAHARA PALMS APARTMENTS
 2300 WEST SAN ANGELO ST
 GILBERT, AZ 85233
 P (480) 926-0392
 F (480) 926-0729
 saharapalms@gmail.com

PLAYA PALMS APARTMENTS
 2200 WEST SAN ANGELO ST
 GILBERT, AZ 85233
 P (480) 926-1013
 F (480) 497-2602
 playapalms@gmail.com

