

# PlymouthPark

Luxury Garden Apartments



# Plymouth Park Apartments

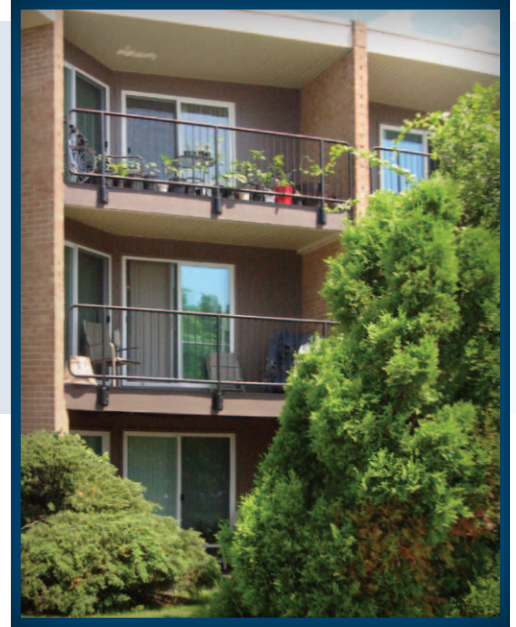
Minutes from downtown Conshohocken, stores and a variety of restaurants...

Our community offers you a serene retreat, yet it is conveniently located near major roads, shopping malls, parks, hospitals and schools.

Plymouth Park is managed by courteous, professional and experienced rental staff and maintenance technicians. Our top priority is to provide you with an attractive, clean and comfortable environment, along with great service.

Call us to schedule a tour of your next home.

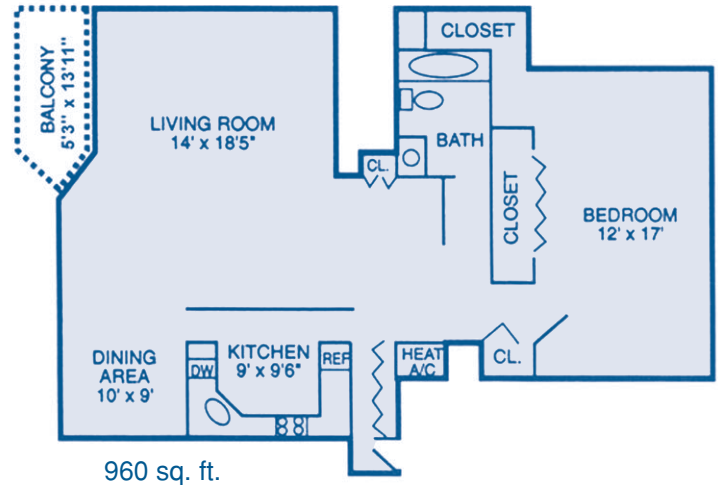
*Plymouth Park Apartments is a 1-, 2- and 3-bedroom community in Plymouth Township, which is in Montgomery County, a suburban county northwest of Philadelphia. It offers particularly large floorplans and is conveniently located near neighborhood parks as well as the PA Turnpike, I-76 and I-476. The SEPTA bus line and train station are nearby. Plymouth Meeting and King of Prussia malls are only a short distance away.*





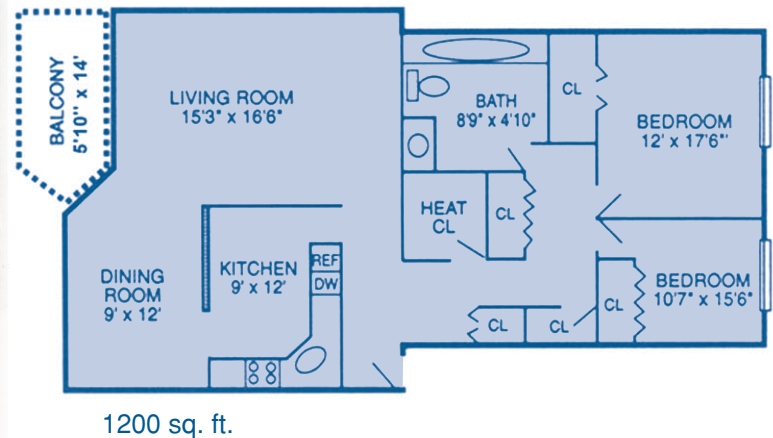
# Spacious Floor Plans

One Bedroom • One Bathroom

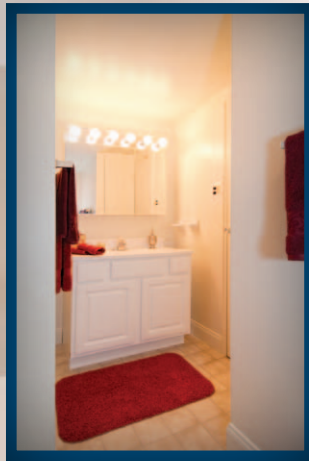


Monthly Rent: \_\_\_\_\_

Two Bedrooms • One Bathroom

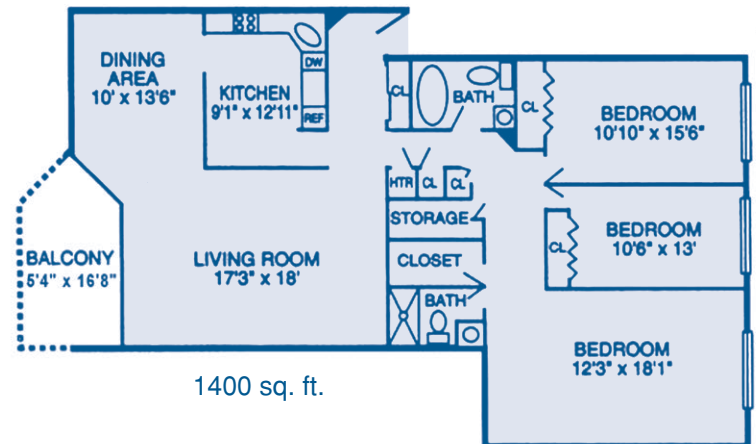


Monthly Rent: \_\_\_\_\_





Three Bedrooms • Two Bathrooms



Heat, Hot Water and Cooking Gas Included in Rent

Monthly Rent: \_\_\_\_\_

# Community Map

*Our community affords you access to the prestigious Colonial School District, public bus service just minutes away, and lots of open space.*

W. North Lane

Butler Pike

PlymouthPark





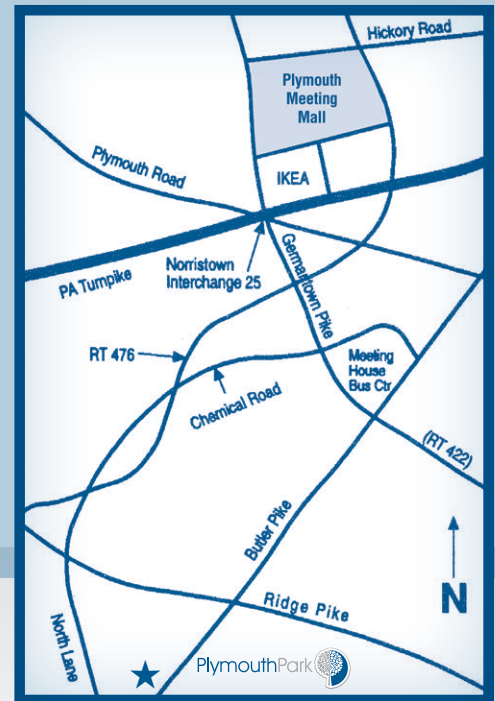
# Directions

## From Philadelphia

- I-76W to Exit 332/  
West Conshohocken
- Merge onto Matsonford Rd
- Continue onto Fayette St
- Continue onto Butler Pike
- Plymouth Park is on the left

## From PA Turnpike

- Take exit 333 toward Norristown
- After tolls take ramp to the right  
(Germantown Pike East)
- Turn right on Chemical Road
- Go straight at Ridge Pike onto  
North Lane
- Plymouth Park is on the left



## Plymouth Park Apartment features:

- Wall-to-Wall Carpeting
- Individually-controlled Central Air and Gas Heating System
- Fully Equipped Kitchen with Frost-Free Refrigerator, Dishwasher, Garbage Disposal and Gas Range
- Pre-wired Cable TV, High-Speed Internet and Telephone with Multiple-line Capacity
- Ceiling Fans in Bedrooms and Dining Room
- Blinds on All Windows
- Spacious Closets
- Outside Balcony
- Uncovered On-Site Parking
- Playground
- Access to Nearby Swimming Pool
- 12-month Leases
- Easy Access to Schools, Shopping and Public Transportation
- On-Site Management and Maintenance

## PlymouthPark



1700 Butler Pike, Conshohocken, PA 19428  
Phone (610) 828-2552 • Fax (610) 828-3735  
[plymouthpark@comcast.net](mailto:plymouthpark@comcast.net)  
[geltmanandcompany.com/plymouth-park](http://geltmanandcompany.com/plymouth-park)

*Managed with Pride*

SAMUEL GELTMAN & COMPANY, INC. • PA LICENSED REAL ESTATE BROKER